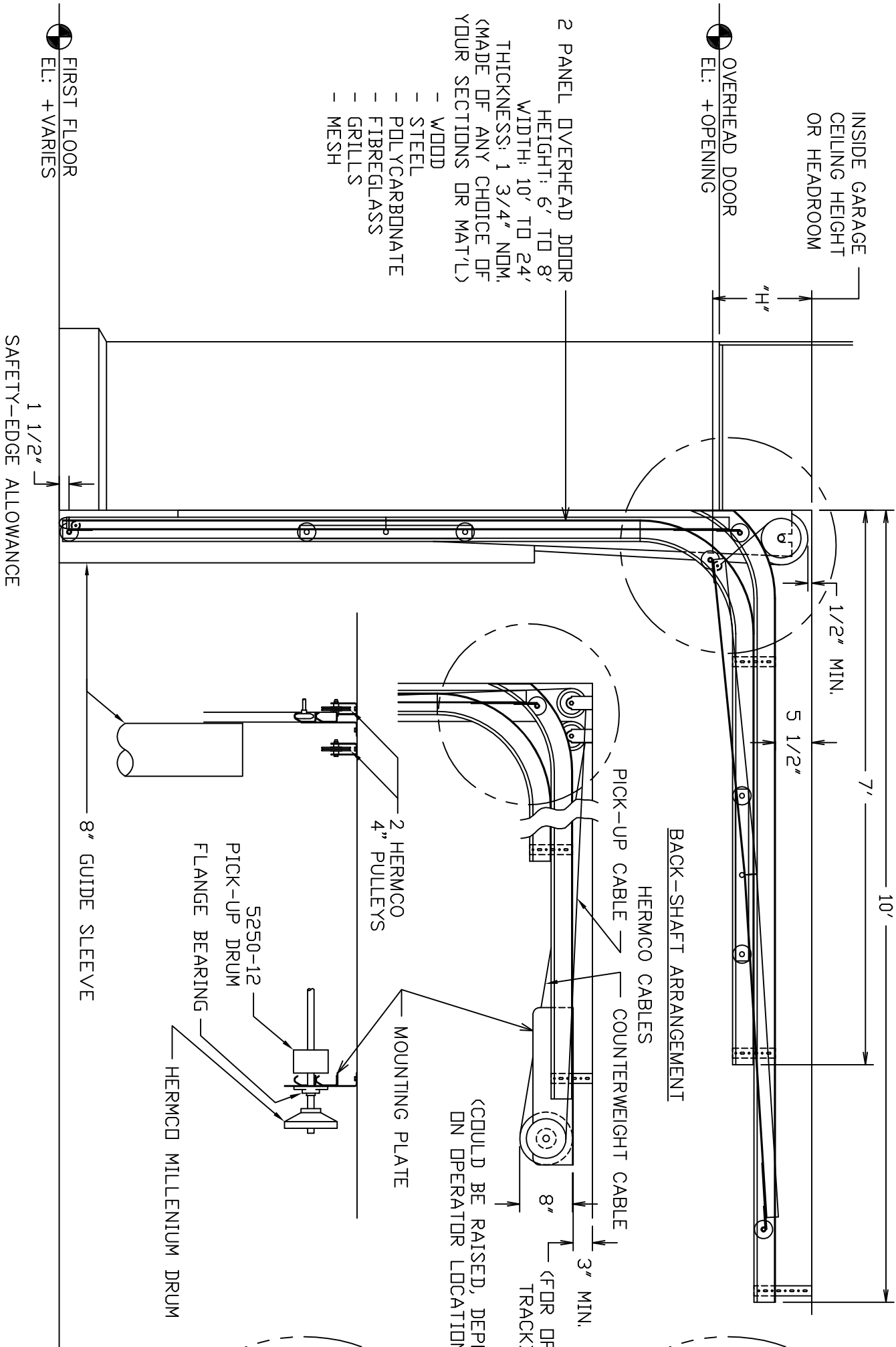


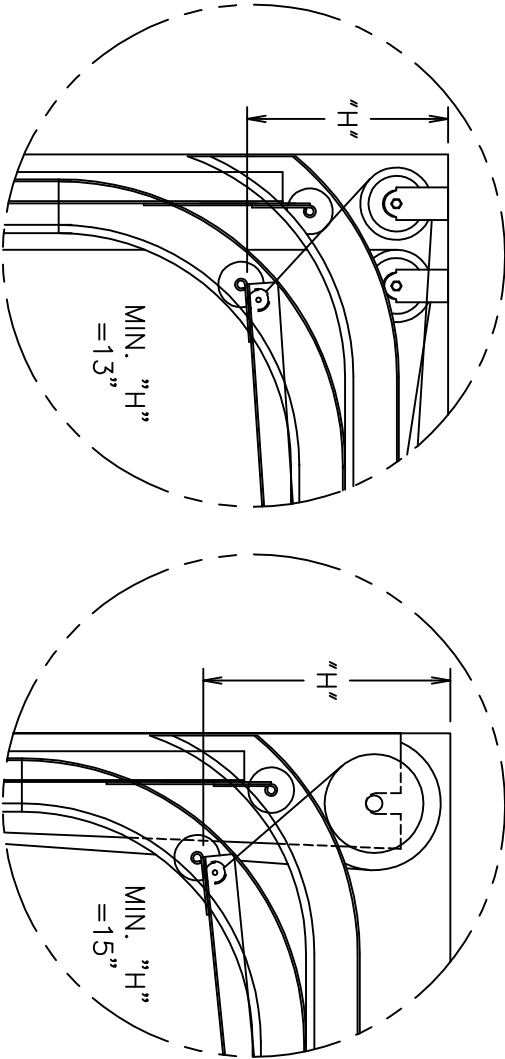
FRONT-SHAFT ARRANGEMENT



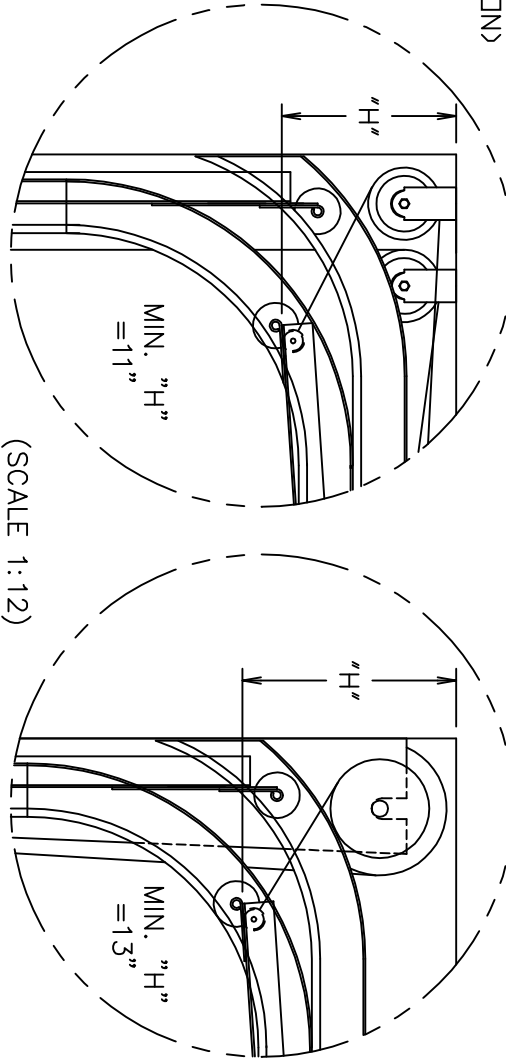
BACK-SHAFT ARRANGEMENT

FRONT-SHAFT ARRANGEMENT

"NATURAL" DOORLAY IN UP POSITION



DOORLAY WHEN HELD BACK 2 1/2" WITH BRAKE



N.B.
A STRAIGHT TOP RACK,
BACKSHAFT SETUP AND
2 1/2" BRAKE HOLD BACK
WILL YIELD INCHES
HEADROOM.

* DOORLAY DIMENSIONS
ARE APPROXIMATE,
AND COULD VARY TO
ON SITE APPLICATION
DIFFERENCES.

* LOW HEADROOM SETUPS SHOULD
ONLY BE USED AS LAST RESORT.

NOTE:

THIS DRAWING, AND SUBJECT MATTER THEREOF, IS NEWTON'S APPLE PROPERTY AND IS CONFIDENTIAL INFORMATION. DISCLOSURE, OR USE OF SUCH INFORMATION WITHOUT THE PRIOR WRITTEN CONSENT OF NEWTON'S APPLE, IS PROHIBITED, EXCEPT AS PROVIDED BY SEPARATE WRITTEN AGREEMENT. WHEN NOT IN USE, THIS PRINT SHOULD BE KEPT IN A SECURE LOCATION, OR DESTROYED. NEWTON'S APPLE MAKES NO WARRANTY EXPRESS, IMPLIED, OR STATUTORY, AS TO THIS DRAWING, OR ANY PART MANUFACTURED TO ITS SPECIFICATIONS. THIS DRAWING IS SUPPLIED FOR THE SPECIFIC PURPOSE OF PART DEFINITION AND LOCATION, AND ANY SPECIFIC SITE APPLICATION DEVIATIONS MUST BE THE RESPONSIBILITY OF THE INSTALLER AND TECHNICIAN.

DRAWING TITLE

2000 LOW HEADROOM SETUPS

NEWTON'S APPLE

CODE IDENT. NO.				DRAWING NO.		P-00399	
SIZE		B		DRAWN BY		RWW	
SCALE		1:20		DATE		FEB. 25, 2000	
				FILE NO.		P-00399	